



TECHSTYLER

Thermal Imagesetting System

The OYO TechStyler wide-format thermal imagesetter gives screen and textile printers an exceptionally affordable, wide-format film output solution enabling the efficient printing of full body graphics right to the edge while producing full-size 600 x 600 dpi film up to 14" wide. OYO's Closed Loop Registration (CLR) control ensures tight registration and delivers both accuracy and consistency. The new TechStyler is capable of producing professional, on-demand, film separations right in your own shop without a darkroom, without a processor and without chemicals.



NO HARMFUL CHEMICALS



NO PROCESSING



NO INKS OR CARTRIDGES



NO TONERS

OYO's thermal imagesetter technology offers clear, compact, environmentally friendly solutions to artwork production, enabling you to eliminate outsourcing of large-format films and bring production-control in-house. OYO's unique, chemistry-free, dry-imaging ThermoImpression® film requires absolutely no fixers, developers, inks or toners while providing UV densities that exceed industry standards.

The TechStyler System includes the latest Harlequin software RIP solution. This RIP package offers PostScript® compatibility, while also supporting PDF, TIFF and EPS file formats. Each system configuration also includes traditional PostScript halftoning, as well as stochastic screening algorithms.

The bottom line: wider edge to edge printability, better day to day performance, improved resolution and registration, less waste and lower costs.

OYO TechStyler Features

- 14.25" media width with 600 x 600 dpi resolution
- Imaging of up to 6 inches per minute
- Closed Loop Registration (CLR) control
- Multi-Level Pulsing (MLP)
- Requires NO inks, toners, cameras or disposal costs
- Automatic media cutter
- USB interface
- Macintosh or Windows RIPs available
- Low maintenance
- High density black with typical density of 5.0
- Archival up to 20 years



FREE SAMPLE FILMS

Call now or fill out our online form



TECHSTYLER

Specifications

WIDE-FORMAT THERMAL IMAGESETTERS

TECH *Styler*

FILM UP TO 14 INCHES WIDE

SPECIFICATIONS

Printhead Configuration	Single-substrate, thick film linear array
Printing Method	Direct thermal technology
Resolution	600 x 600 dpi
Media Drive	Stepper motor
Paper Type	ThermolImpression™ Proofing Media
Paper Length	200 foot roll
Film Type	ThermolImpression™ Polyester Film
Film Length	200 foot roll
Optical Density (Film)	4.0 typical (UV)
Registration Accuracy	±0.01% or ±0.002 in/20 in or 0.05 mm/500 mm
Interface	USB

OPERATING REQUIREMENTS

Voltage	115 or 220 VAC (Auto-switch)
Frequency	50-60 Hz
Power Usage	50 Watts idle mode 600 Watts plot/print mode
Temperature	Operating: 60° to 80° F (15° to 27° C) Storage/Shipping Range: 14° to 158° F (-10° to 70° C) Humidity: 5 to 95% non-condensing
Media Temperature	Operating: 60° to 80° F (15° to 27° C) Storage/Shipping Range: 14° to 86° F (-10° to 30° C) Humidity: 5 to 95% non-condensing



IMAGESETTER MODEL SELECTION CHART

Model	TECHStyler
Media Width	14.25 in (361.95 mm)
Plot Width	14.08 in (357.6 mm)
Plot Rate	6.14 in/min (155.96 mm/min)
Height	10.9 in (27.7 cm)
Width	23.5 in (59.69 cm)
Depth	20.5 in (52.1 cm)
Net Weight	72 lbs (32.7 kg)

HARLEQUIN RIP

Version 9 Benefits

If you have a mixed workflow and receive files in more than one format you don't need to learn different tools for color management, trapping, transparency or screening when using the RTI Harlequin RIP. The software gives you the ability to print across the network to the RIP through shared printers which means faster output times and less hassle trying to manage jobs into different applications.

Versatility and Performance

With support for over 300+ output devices, the RTI Harlequin RIP offers a wide variety of options and plugins. The Harlequin RIP also includes the ability to simultaneously RIP and print for faster output. Multi-threaded rendering helps remove RIP bottlenecks in handling raster data and takes full advantage of the new Duo and Quad core technologies.

PostScript® Level 3

Support for PostScript® Level 3 means compatibility with the latest design and printing applications such as Acrobat X, Adobe CS5.5, Quark XPress 9, Preps, Dynastrip and inpO2.

Built-in Preflight Profiles

Enfocus PitStop 4.0 lib/v7 preflight profiles are included with the Harlequin RIP.

PDF v.1.7

Support for PDF v.1.7, PDF/X-4, PDF/X-1a, JPEG2000, optional content, cross-reference streams, compressed object streams and 16-bit.

XPS and JDF

Support for XPS v.1.0 Documents with PrintTickets. Job Definition Format (JDF) is an XML-based file format that is becoming the industry standard for the definition of electronic job tickets in prepress workflows.

Separations and Screening

The Harlequin RIP allows you to control and manage resolutions, line screens (frequency), screen angles and dot shapes. Print more than 4,000 shades of gray for maximum quality at almost any resolution.

Advanced Font Support

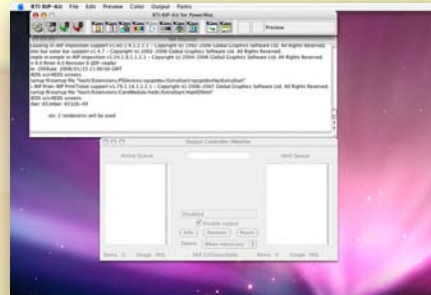
Extended font format support includes PostScript Type 0 (composite), Type 1, Type 3, Type 4 and fonts, as well as native processing of Type 32 and Type 42 True Type fonts.

Enhanced Variable Data Support

The built-in external "PDF Retained Raster" feature recognizes shared backgrounds on pages throughout the PDF file and only renders each one once. Version 9 provides the technology required to build a Digital Front End that is fully compliant with the PDF/VT standard (ISO 16612-2:2010) for variable and transactional printing.

Color Accuracy Enhancements

Version 9 receives updated SWOP, PantonePlus and FOGRA profiles which are now built right into the RIP.



Output Preview

Preview jobs in full composite color or preview each plate individually to quickly find and correct mistakes before wasting consumables.

Support for Macintosh OS 10.7 (Lion)

Users are now able to run the RIP and print to the RIP from Macintosh OS 10.7.

Optimization for PDF files with live Transparency

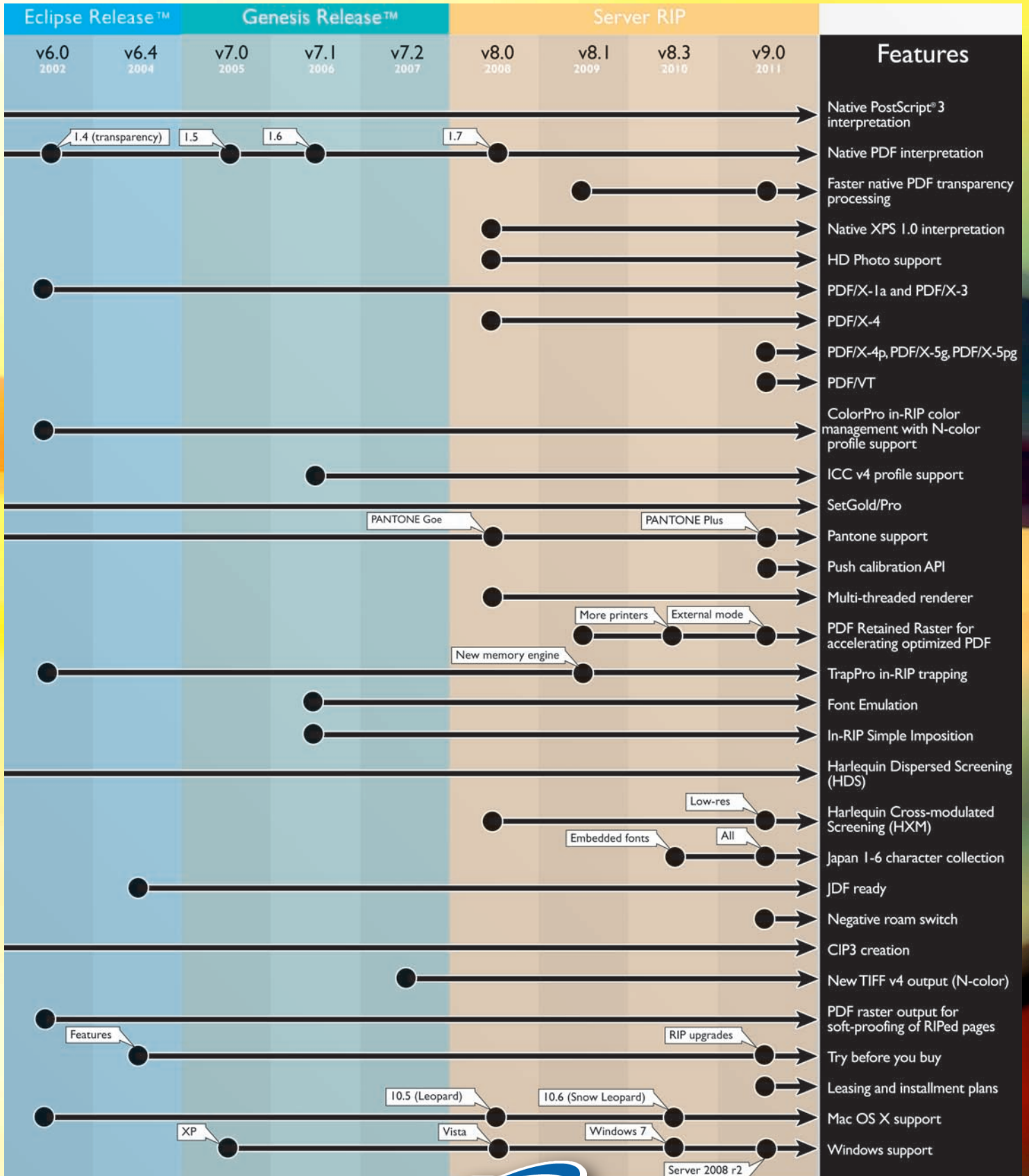
The RTI Harlequin RIP has included native rendering of PDF files that use live transparency since 2002, but doing so takes significantly more work than processing fully opaque pages. As a result, rendering live transparency takes more time. Version 9 accelerates the speed of processing transparent pages significantly.

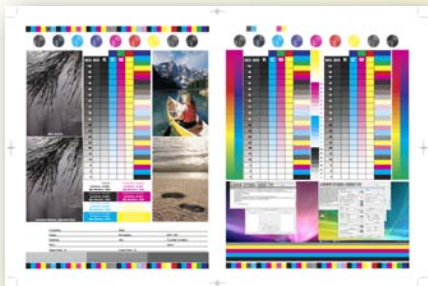
Supported File Types

For users that are not printing to the RIP through a shared printer, the RIP or workflow can process the following file types directly or through a shared spoolfolder (drop folder):

- PostScript 1, 2 and 3
- PDF 1.2, 1.3, 1.4, 1.5, 1.6, 1.7
- PDF/X-4
- PDF/X-1a:2001
- PDF/X-3:2002
- PDF/X-4p:2008, PDF/X-4:2010, PDF/X-4p:2010,
- PDF/X-5g and PDF/X-5pg
- XPS
- WDP HD Photos
- TIFF™ 6
- PCL
- JPEG, GIF, EPS, JBIG2
- DCS and DCS 2
- JDF

Version 9 Features





RIP Options

Growing with your business

TrapPro in-RIP Trapping

TrapPro is fully integrated into the RIP for enhanced workflow efficiency and maximum job throughput. TrapPro eliminates the need to manually trap jobs within the design application.

Hybrid Screening (HXM)

HXM combines the best of stochastic and traditional screening. Hybrid Screening generates a seamless transition between stochastic highlight dots and conventional screening methods.

Harlequin Dispersed Screening (HDS)

HDS is Harlequin's second generation frequency modulated (FM Screening / Stochastic) screening system. HDS creates reproductions with increased sharpness over conventional screening methods and offers complete freedom from both object and cross-screen moiré.

Harlequin Chain Screening (HCS)

HCS is particularly suited to printing charts, weather maps and other computer-generated graphics. HCS uses a long elliptical dot, instead of conventional symmetrical dot shapes.

Harlequin Micro Screening (HMS)

HMS was developed to meet the unique requirements of specialty printers. HMS takes advantage of the benefits of higher screen rulings by enhancing highlight printability.

CIP3

The CIP3 plugin is used to produce a Print Production File (PPF file). This plugin gives users the ability to automatically include press specific ink key setting data in a RIPPed file. This data is then provided to the press operator as a PPF file.

Color Management & Digital Proofing

Add an inkjet plugin to your RIP and cut down on wasted materials by proofing files. Harlequin ColorPro provides excellent color process control, giving accurate, consistent and predictable color reproduction for a wide range of workflows. ColorPro offers support for industry standard ICC profiles (including devices link profiles) avoiding dependence on the generic, system level color management of the computer's operating system.

TIFF/IT Plugins

TIFF/IT file formats are widely used in the delivery of electronic content in magazine and newspaper publishing.

Imposition

We sell a variety of imposition programs that seamlessly integrate into the Harlequin RIP and Workflow Systems.

Lightning TIFF

Lightning TIFF is a high performance TIFF output plugin. It is designed to work with any full resolution Harlequin RIP dongle v.5 or later. As well as providing a significant number of additional features, the software's main benefit is its lightning fast performance. Most users will see up to a 4x overall improvement in performance and throughput when it is used.

Try Before You Buy

This feature allows users to try Version 9 for 30 days free of charge. It also means that you can now unlock and try most of the options available to the RIP on a trial basis.

90 DAYS OF FREE TECHNICAL SUPPORT

WebEx online support means faster response times. Annual support contracts are also available for customers that wish to get unlimited technical support and free upgrades each year.

Call today to find out how we can help your company benefit from new prepress software.



FREE DEMO
30 day trial now available

rti-rips.com 800-816-5755

RTI Global Inc.

7222 South Tamiami Trail, Suite #201, Sarasota, FL 34231

Phone: 941-925-1303

sales@rti-rips.com

<http://www.rti-rips.com>

